


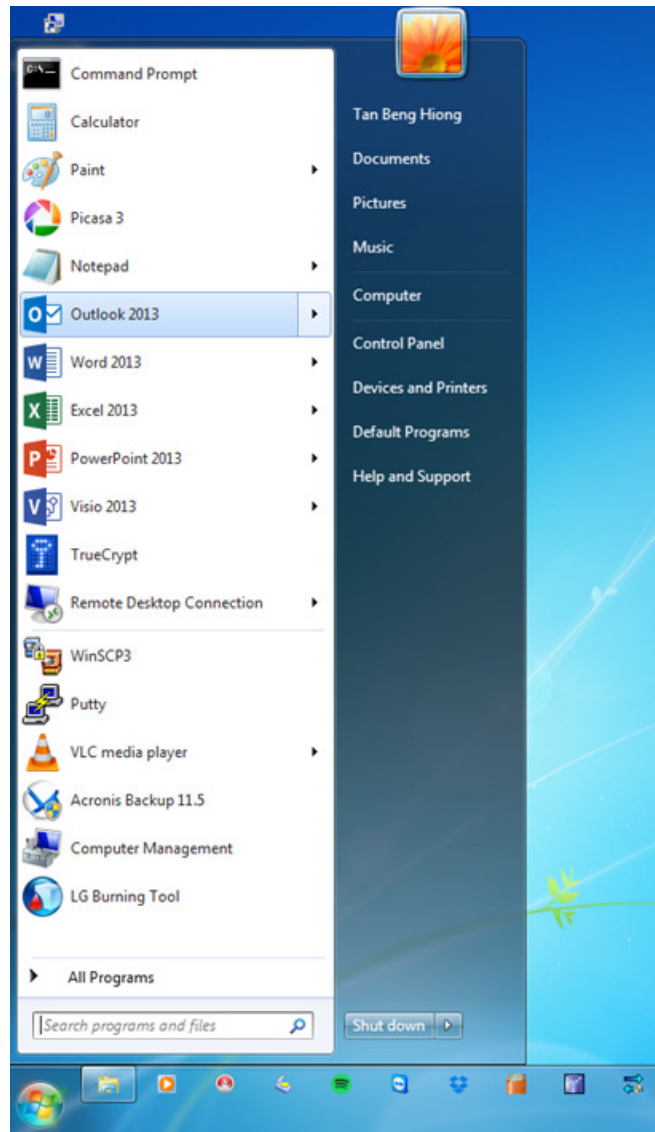
## EMAIL CONFIGURATION GUIDE

For

### Microsoft Outlook on Windows 7

#### A. Microsoft Office Outlook

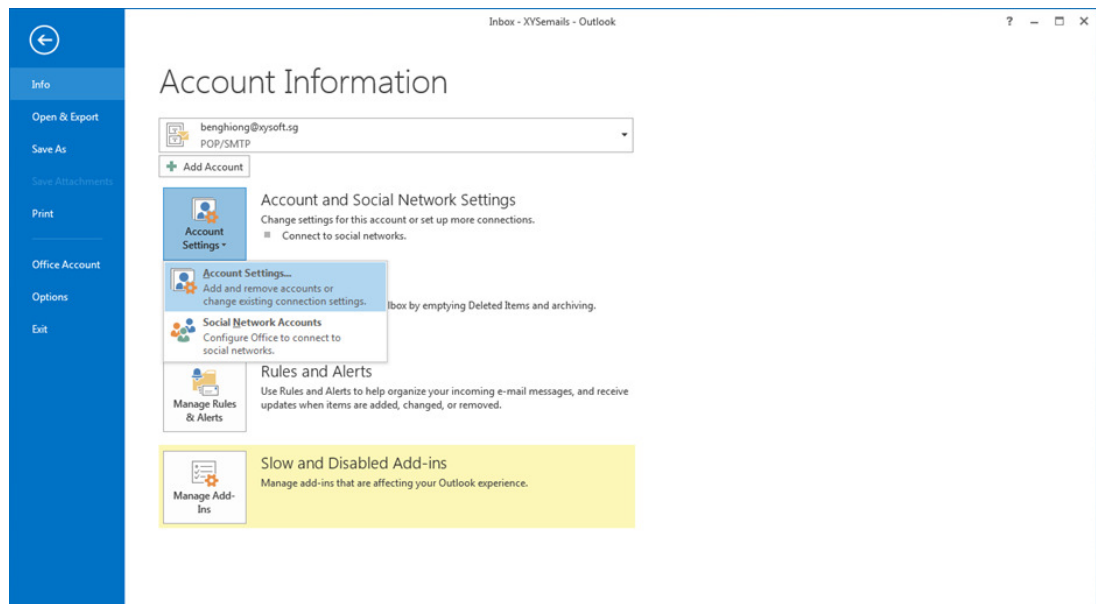
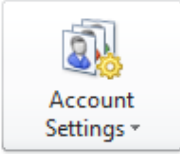
**Step 1 :** Click on the  button, and search for [Microsoft Outlook] program.

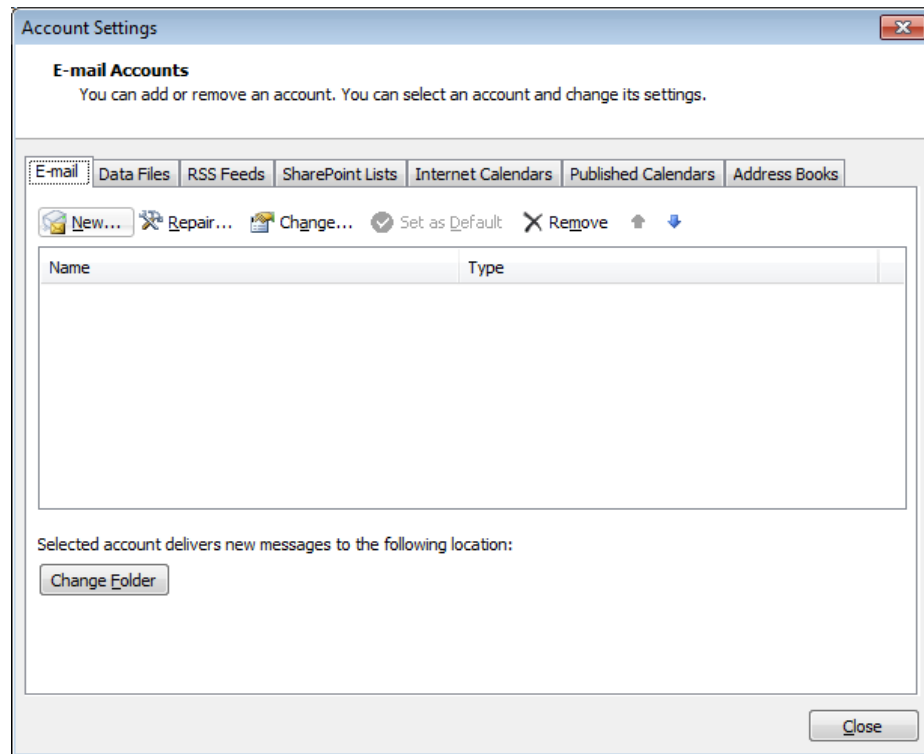



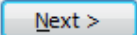
**Step 2 :** From the menu bar, click on the [FILE] tab.

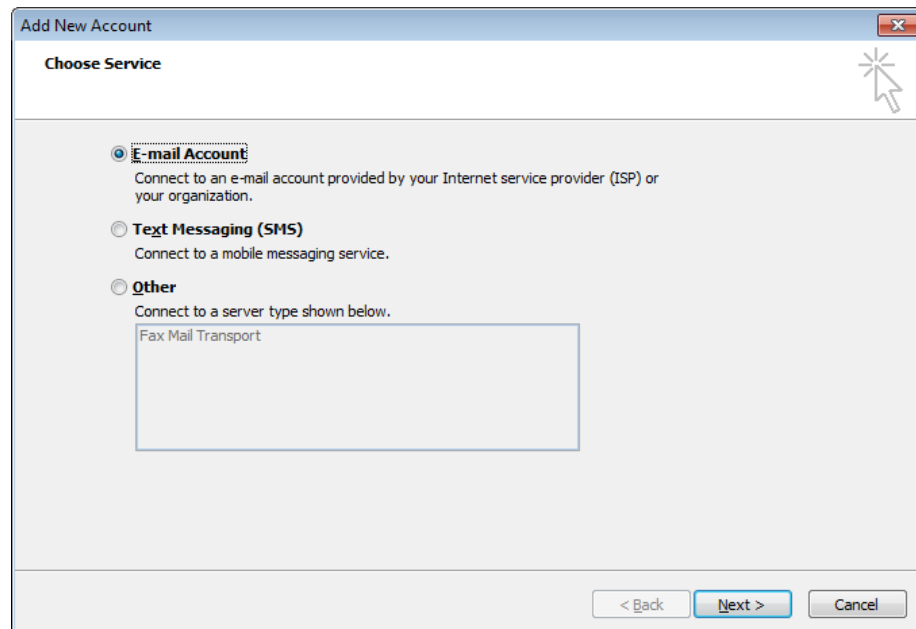


**Step 3 :** Click on the  button and select [Account Settings]

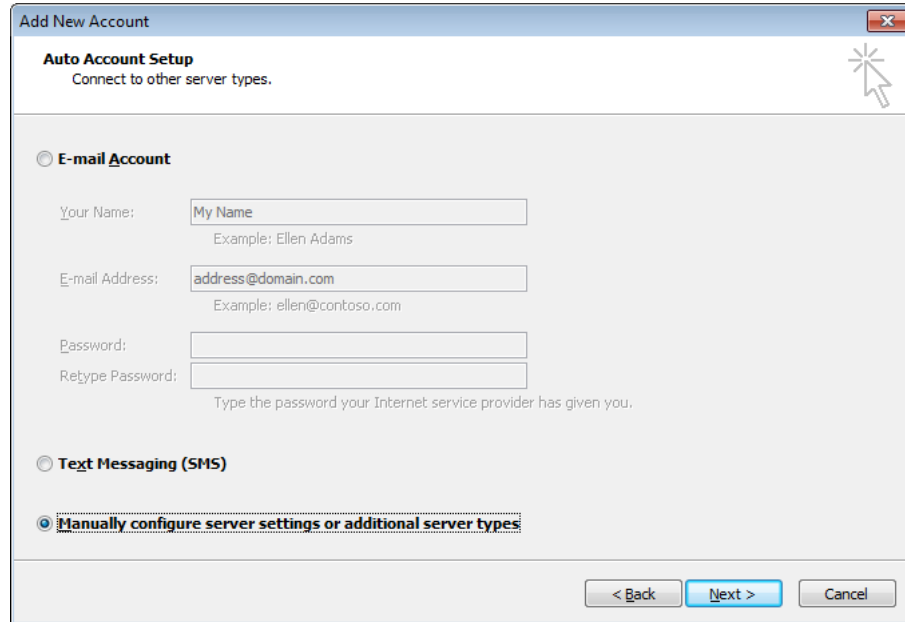




**Step 4 :** In the [Account Settings] window, click on  and a new window will show up. Select [E-mail Account] to add a new E-mail account and select  to continue setup.



**Step 5 :** Enter your name and email address and then select the radio button to [Manually configure server settings or additional server types] and click on [Next].



**Add New Account**

**Auto Account Setup**  
Connect to other server types.

**E-mail Account**

Your Name:   
Example: Ellen Adams

E-mail Address:   
Example: ellen@contoso.com

Password:

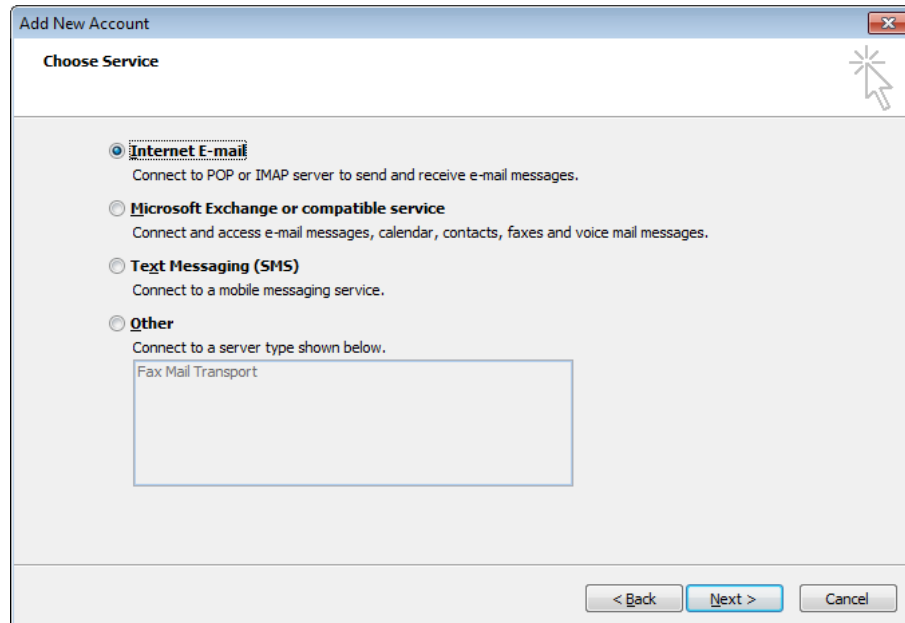
Retype Password:   
Type the password your Internet service provider has given you.

**Text Messaging (SMS)**

**Manually configure server settings or additional server types**

< Back   Next >   Cancel

**Step 6 :** Select the radio button for [Internet E-mail] and click on [Next].



**Add New Account**

**Choose Service**

**Internet E-mail**  
Connect to POP or IMAP server to send and receive e-mail messages.

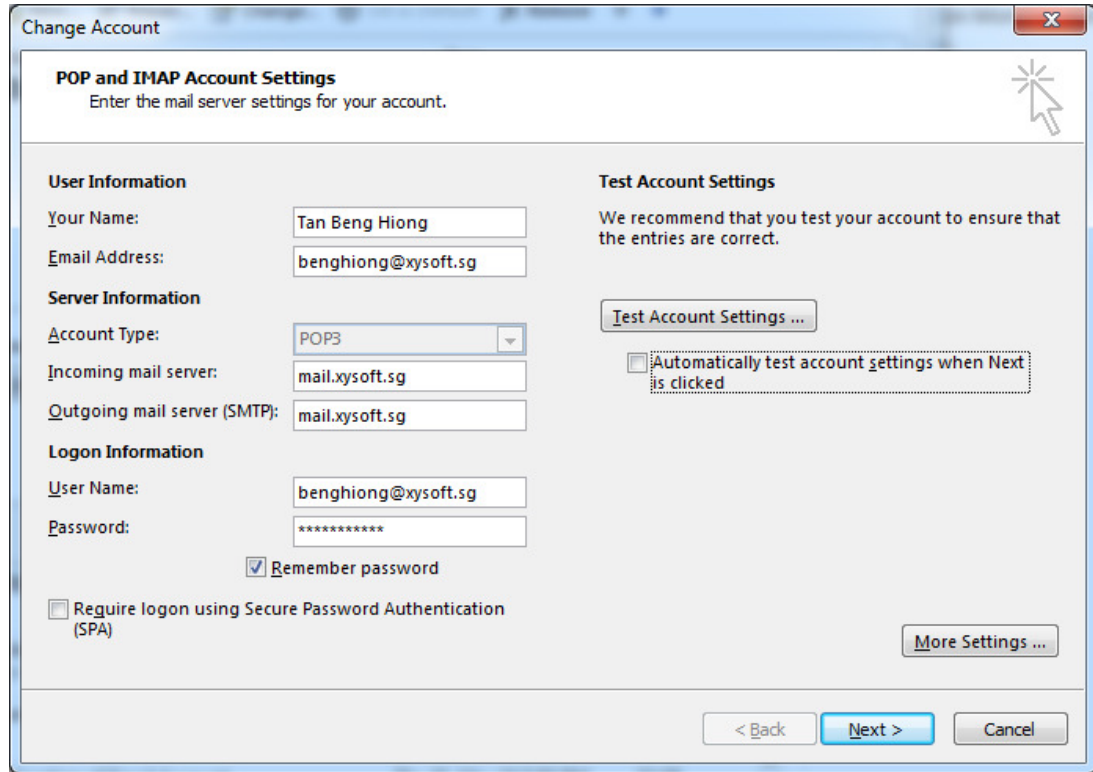
**Microsoft Exchange or compatible service**  
Connect and access e-mail messages, calendar, contacts, faxes and voice mail messages.

**Text Messaging (SMS)**  
Connect to a mobile messaging service.

**Other**  
Connect to a server type shown below.

< Back   Next >   Cancel

**Step 7 :** Enter the details for [User Information], [Server Information] and [Logon Information] as shown below: (Refer to the Appendix of this document for Key Information).



**Change Account**

**POP and IMAP Account Settings**  
Enter the mail server settings for your account.

**User Information**

Your Name:

Email Address:

**Server Information**

Account Type:

Incoming mail server:

Outgoing mail server (SMTP):

**Logon Information**

User Name:

Password:

Remember password

Require logon using Secure Password Authentication (SPA)

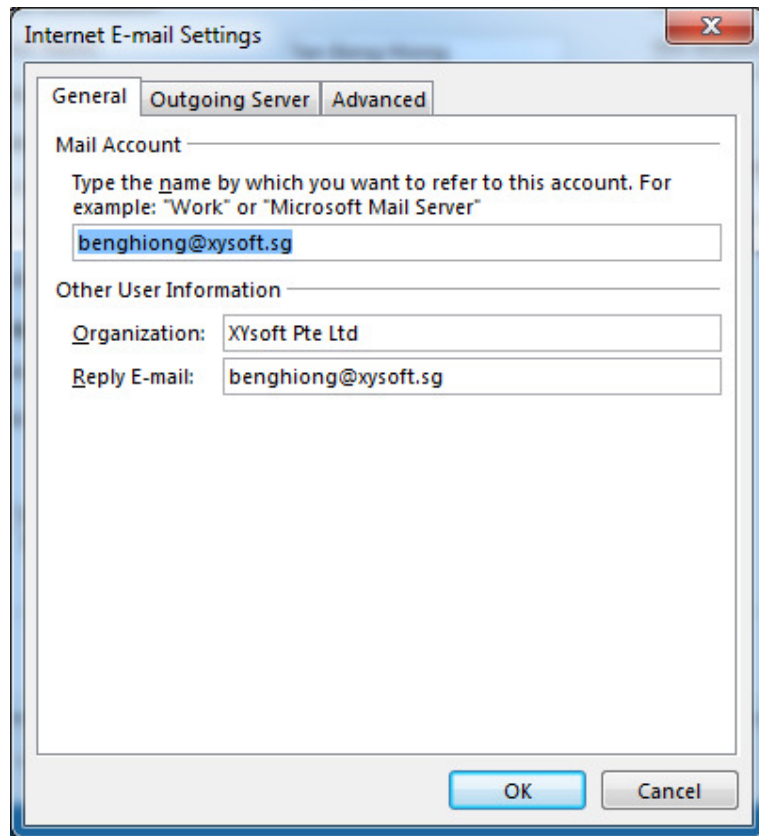
**Test Account Settings**

We recommend that you test your account to ensure that the entries are correct.

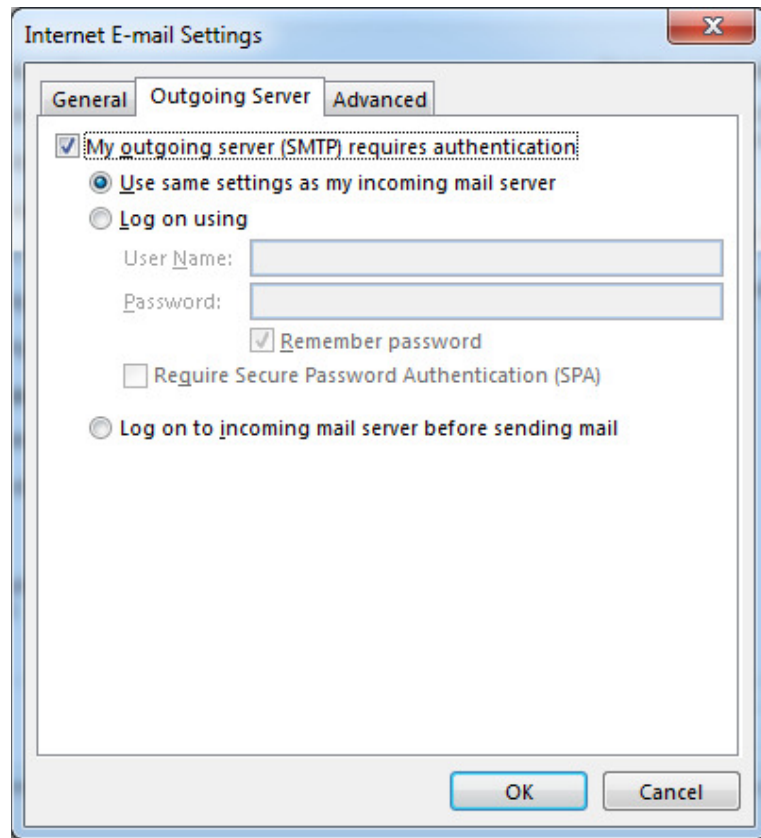
Automatically test account settings when Next is clicked

< Back   **Next >**   Cancel

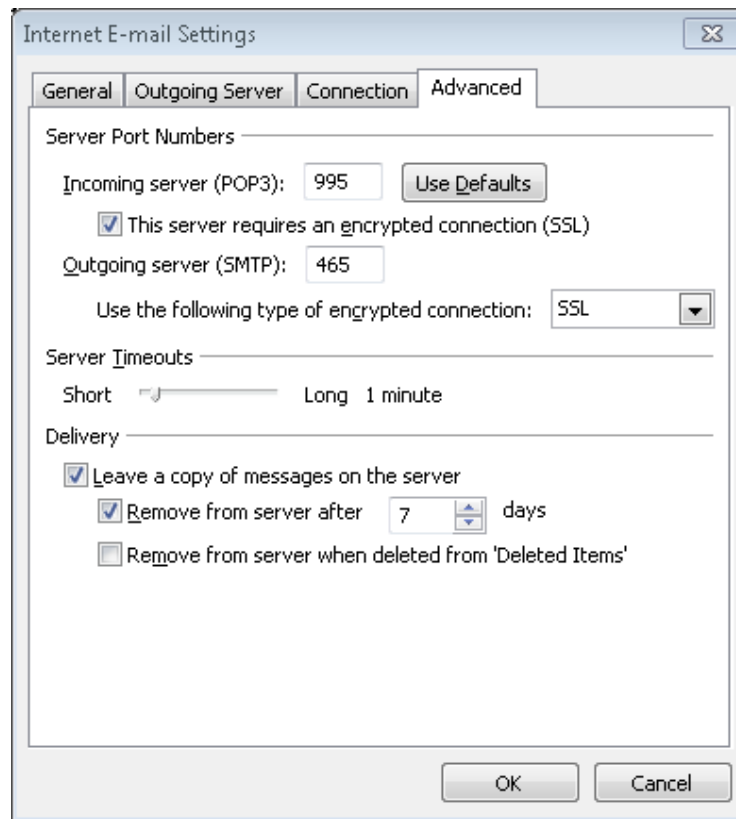
**Step 8 :** Next, click on the  button for advanced settings.

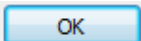
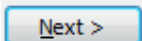


**Step 9 :** Click on the [Outgoing Server] tab for and check the checkbox for [My outgoing server (SMTP) requires authentication] as shown below:



**Step 10 :** Next, click on the [Advanced] tab for Server Port Numbers settings. (Refer to Appendix for more details on what port numbers to use.)



**Step 11 :** Next, click on  and then  to finish the setup.



## **Appendix: KEY INFORMATION**

### **Email Address**

name@[Domain name]

### **Server Information**

Incoming mail server: mail.[Domain name]  
Outgoing mail server: mail.[Domain name]

### **Logon Information**

User Name: < Email address >  
Password: < Email password >

### **More Settings (Advanced)**

#### **POP3/POP settings**

- Incoming mail server: mail.[domain name]
- Incoming port number: 995
- This server requires an encrypted connection (SSL):
- Outgoing mail server: mail.[domain name]
- Outgoing port number: 465
- Use following type of encrypted connection: SSL

#### **IMAP settings**

- Incoming mail server: mail.[domain name]
- Incoming port number: 993 (with SSL)
- This server requires an encrypted connection (SSL):
- Outgoing mail server: mail.[domain name]
- Outgoing port number: 465
- Use following type of encrypted connection: SSL

~ ~ *END OF DOCUMENT* ~ ~ ~