

VPN Configuration Guide

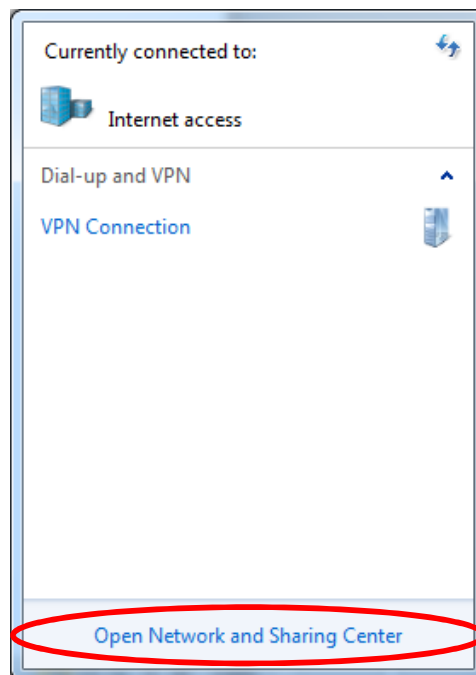
For

Windows 7

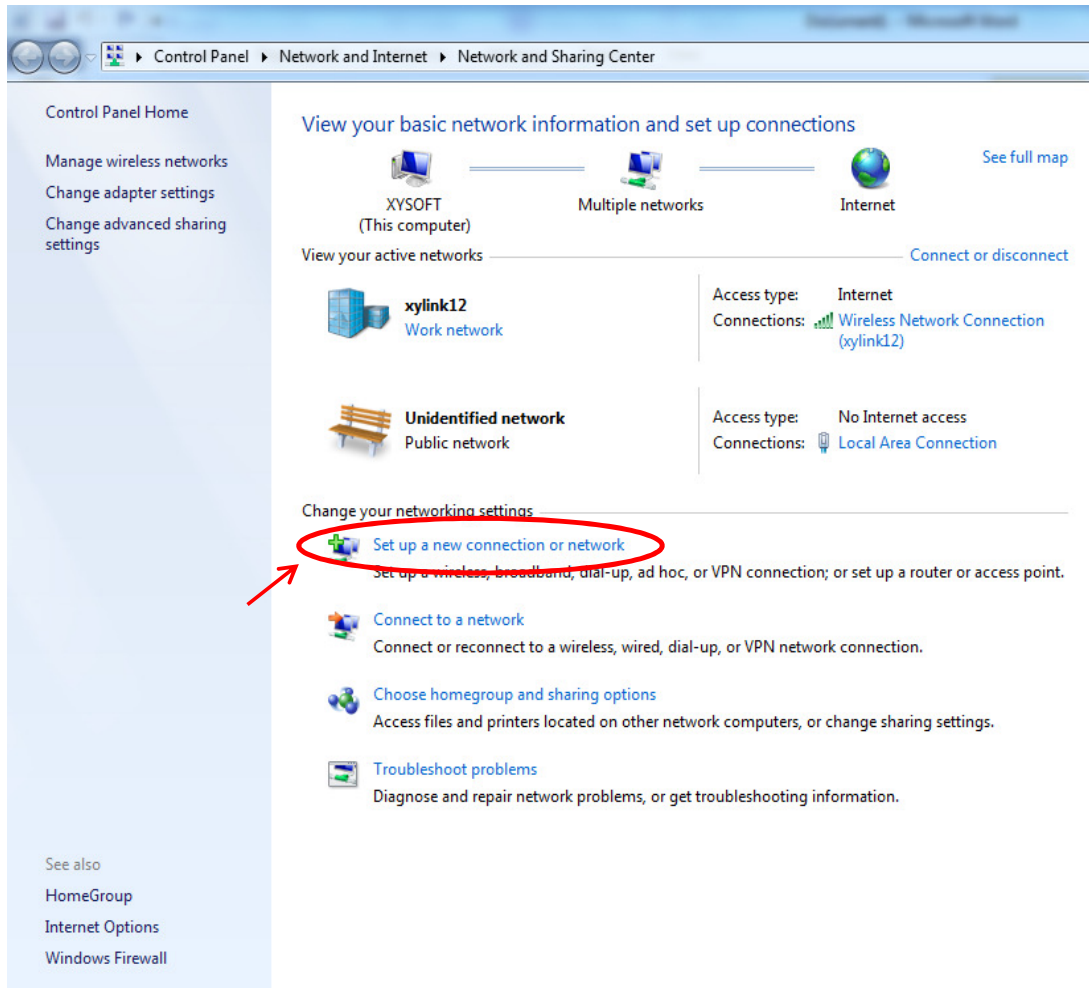
Step 1: Click on the network icon on the task bar (located bottom right corner).



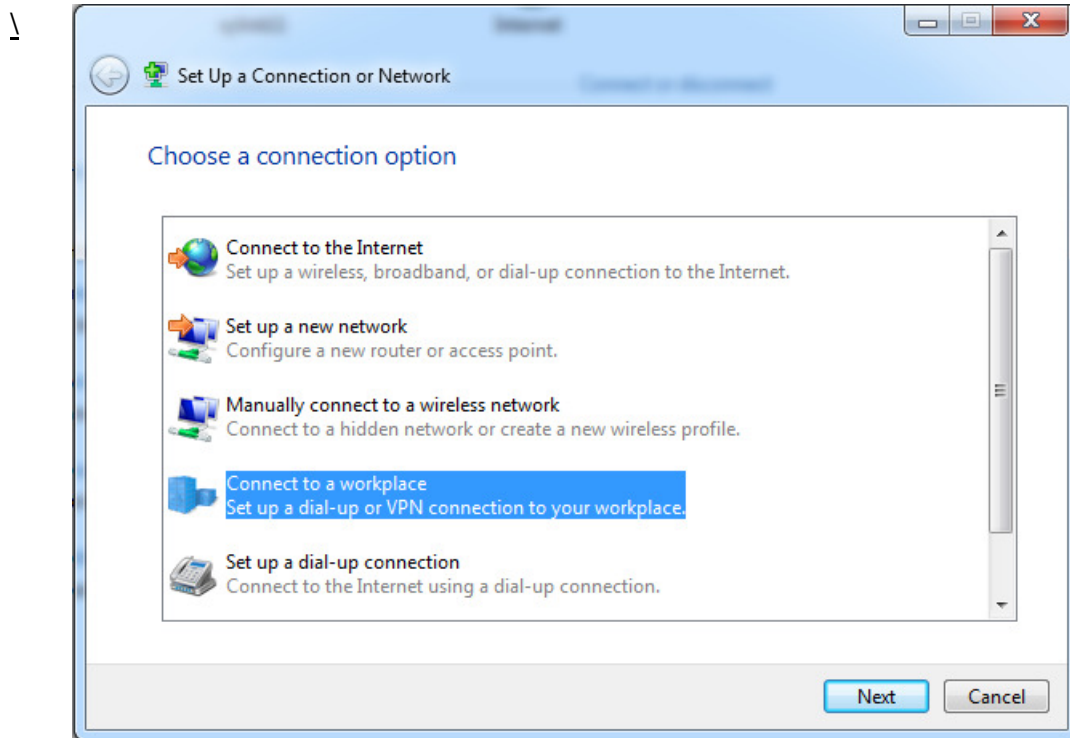
Step 2: Click on [Open Network and Sharing Center].



Step 3: Click on [Set up a new connection or network].



Step 4: Select [Connect to a workplace] and click [Next].



Step 5: Select [Use my Internet connection (VPN)].



Step 6: Next, give this VPN connection a name, preferably the VPN's server name. Enter the VPN's server name in the [Internet address] field. Enter the VPN connection name in the [Destination name] field. Click Next.

Connect to a Workplace

Type the Internet address to connect to

Your network administrator can give you this address.

Internet address: [Example:Contoso.com or 157.54.0.1 or 3ffe:1234::1111]

Destination name: VPN Connection 2

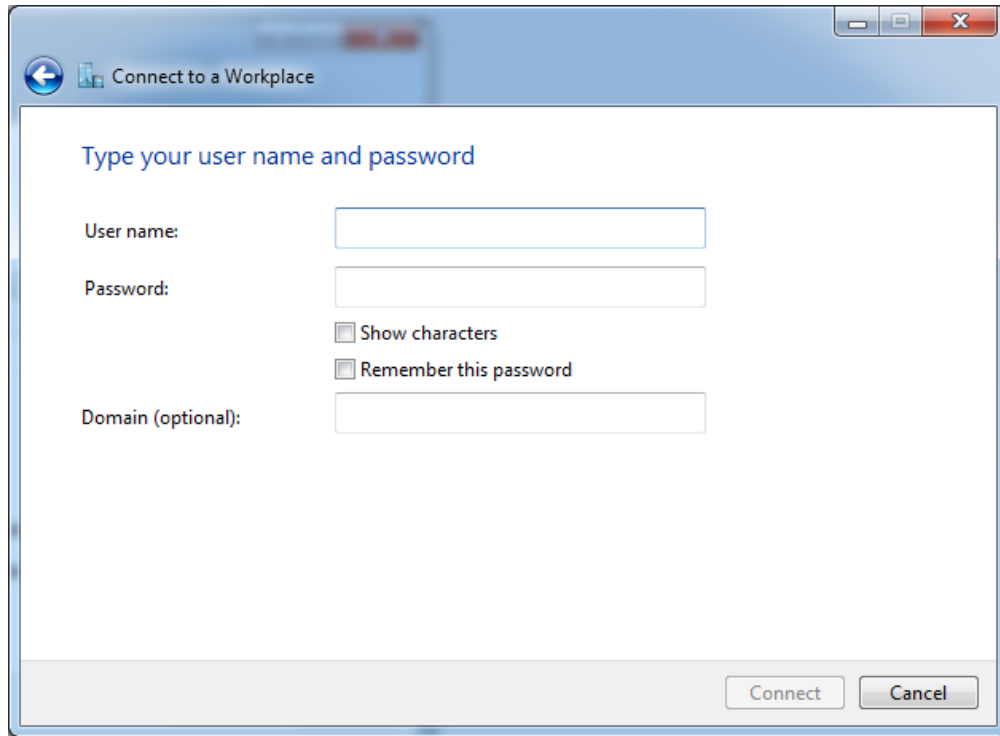
Use a smart card

Allow other people to use this connection
This option allows anyone with access to this computer to use this connection.

Don't connect now; just set it up so I can connect later

Next Cancel

Step 7: Enter the login details that was provided to you. Check the [Remember this password] box to remember your login details. Click Connect.



Connect to a Workplace

Type your user name and password

User name:

Password:

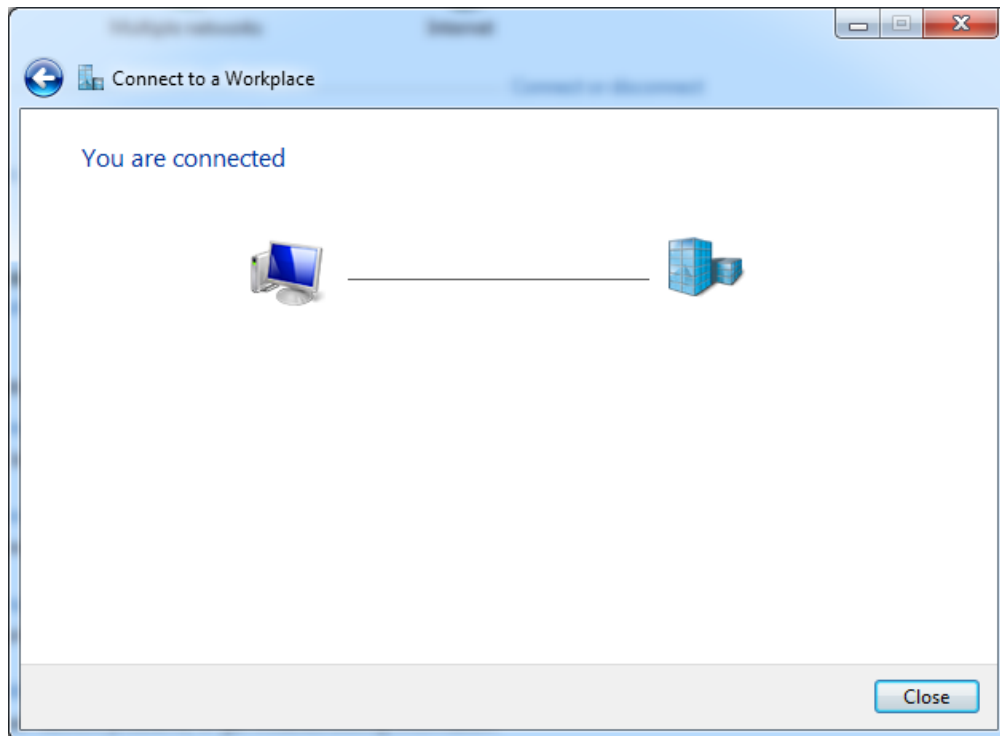
Show characters

Remember this password

Domain (optional):

Connect Cancel

Step 8: If the login details are entered correctly, the window will verify the login details and show that you are connected to the VPN network.

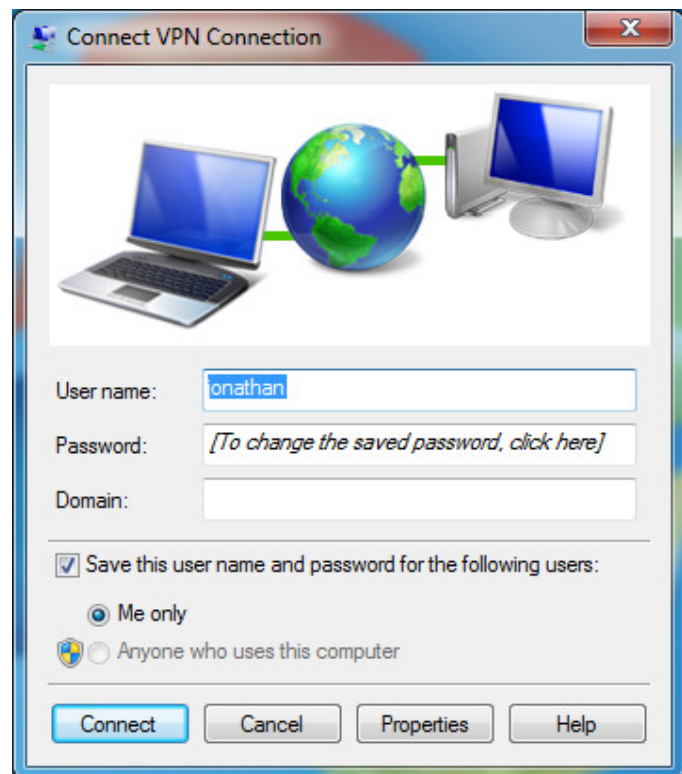


Step 9: For subsequent VPN login, you may login to the VPN network on the desktop of your PC/laptop as well.

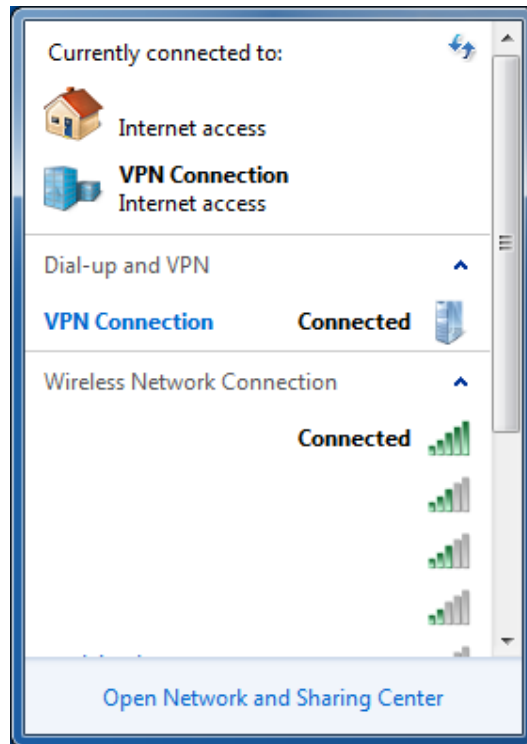
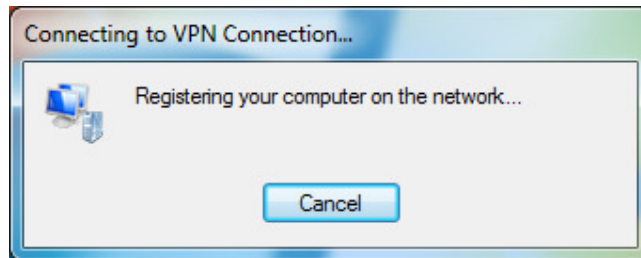
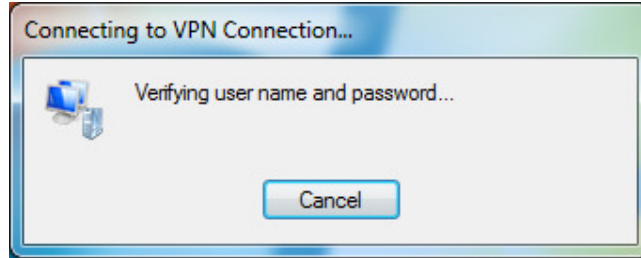
From the desktop of your PC/laptop, you will see a Network icon (circled in red) on the bottom right of the screen. Click on it, and a list of network will appear. Click on the VPN network (circled in red), and the [Connect] button will appear. Click on [Connect], and the [Connect VPN Connection] window will appear.

If you saved your login details during setup, just click [Connect] to login.

If you did not save your login details during setup, enter your login details and click [Connect] to login.



Step 10: After clicking [Connect], it will verify your login details and register your computer onto the VPN network if successful.



~ ~ ~ END OF DOCUMENT ~ ~ ~